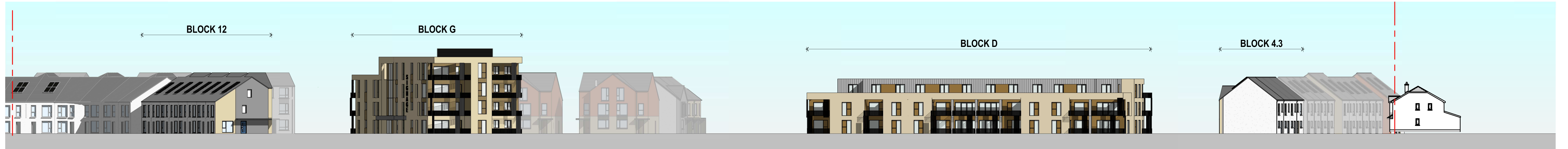
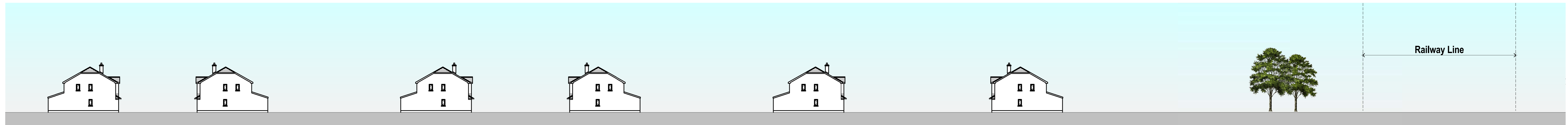


1 Site Section G-G  
1:550

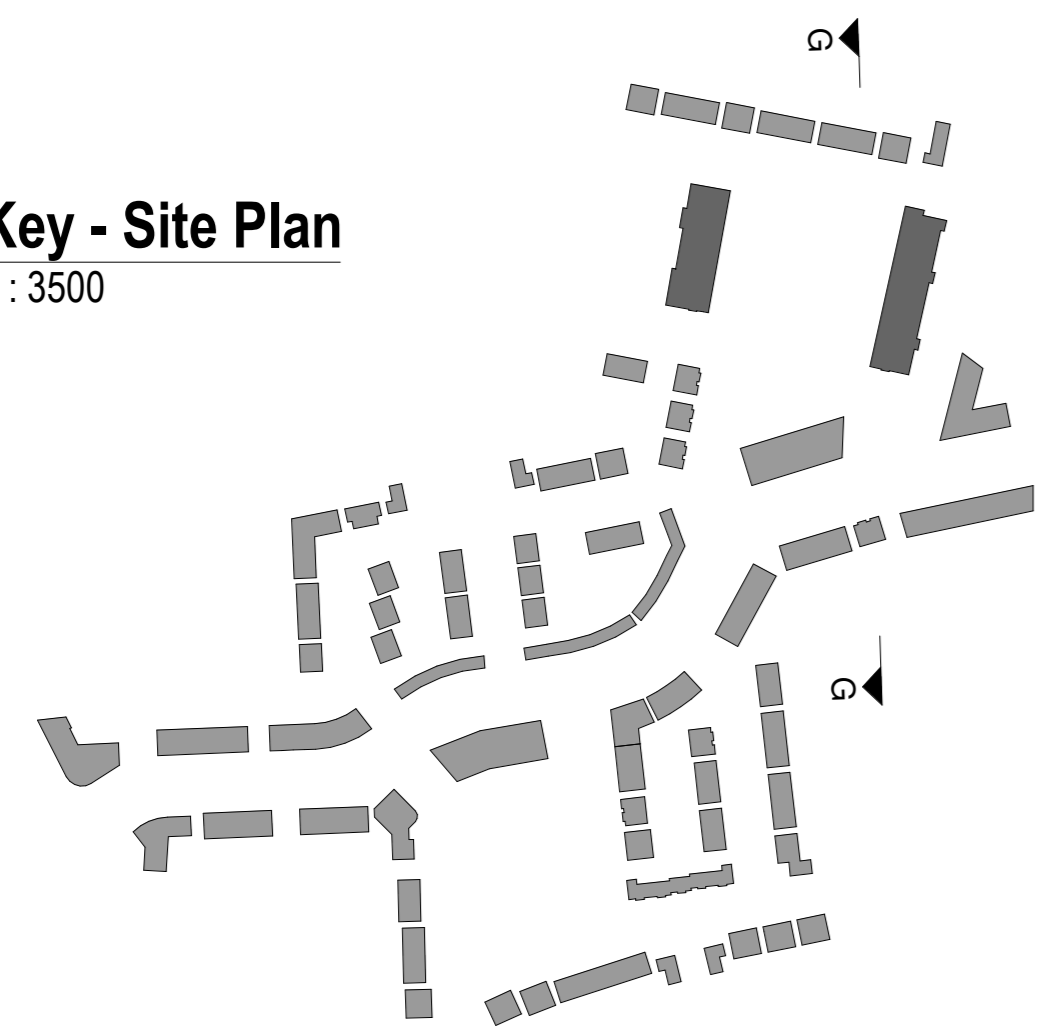


2 Site Section G-G Part 01  
1:250



3 Site Section G-G Part 02  
1:250

4 Key - Site Plan  
1:3500



**CPR Note:**  
All works to be carried out using proper materials which are fit for the use they are intended and for the condition in which they are to be used.  
All materials used in connection with the works to comply with the Construction Products Regulation (EU) No. 305/2011 and the harmonised technical specifications/standards that fall within the remit of the CPR No. 305/2011.



DRAWING TITLE			
SITE SECTION G-G			
NO.	DATE	BY	CHKD
01	18.10.2021	AC	CLM
PROJECT		CLIENT	
1751 PA 02		SITE INVESTMENTS	
BLOCK		DATE	
BG		18.10.2021	